

WIG CARE

How to Store Your Wig

We recommend you keep your wig within the net and bag provided to keep the dust out. If you'd prefer to keep it on display, a wig head or wig holder is the proper way to display your wig.

How to Wash Your Wig

1. Detangle your wig by using a big brush (straight styles only) or a wide tooth comb. Curly wigs should be untangled by hand, no combs or brushes. Use your fingers to separate the individual curls so that they retain their shape.
2. Fill a basin or a container with cool water and mix in a bit of shampoo and conditioner. Immerse your wig and swirl it around gently. Let it soak for about 5 minutes.
3. Rinse your wig by gently running cool water over it. Do not rub as it will tangle up the wig.
4. Pat dry with towel. Do not wring or rub as, again, it will mess up the wig.
5. Place your wig on a wig stand and leave to dry.

*Rockstar Wigs® and its subsidiaries are not responsible for any damage done to the wig while washing it. Please use your best judgment when washing your wig.

How to Brush Your Wig

There are a few ways to properly and safely brush your wig. First of all, let's start with the basics. Your tools!



NEVER, NEVER, NEVER brush your wig with a standard hair brush that you would brush your natural hair with. It will damage the fibres and can completely ruin your wig. **Only use a wig brush or a wide-toothed comb.**

There are many ways to brush wigs, but my favourite ways are to brush with a wide-toothed comb and finger-combing. Use a wide-toothed comb over a wig brush because it gives you more control and they are very inexpensive and readily available at lots of stores. Finger-combing (brushing with your fingers) is nice for daily upkeep because it's easy, you always have your fingers with you, and you can style and finger comb at the same time. The downside of finger-combing is that it is harder to get out larger and tougher tangles.

The best way to brush a wig is from the bottom up. Start with detangling the ends of the hair, and SLOWLY work your way up to the top of the wig (brushing downwards- NO BACKCOMBING! unless you want your wig to be forever a poof ball). Detangling a badly knotted wig requires a lot of patience. You can also use wig conditioner to help detangle wigs.

Brush & care for your wig after EACH WEAR before storing it. This helps prevent build-up of tangles that become harder and harder to get out.

How to Brush and Restore Straight Wigs

The preferred method for taking care of straight wigs is with a wide-toothed comb. Because there are no curls to worry about ruining, it's much faster and easier to brush it with a comb as opposed to finger combing. The longer the wig, the easier it will tangle, so if you are trying to brush a very long straight wig, please be patient!! If you get frustrated and pull too hard on the hair, you can damage it, make the tangles worse, or pull the hair out.



This demo wig is [Straight Classic in Burgundy](#).

Remember to start combing at the bottom! It is important to detangle the ends first or it's possible to make the tangles much worse than they were to begin with.

If after wearing or storing your wig it is not as straight as you like it to be, fear not! Wigs can be straightened!

*This information is all based off of GLW/RSW quality and fibers and relate to Rockstar Premium Wigs. Cheaper quality wigs (eBay, etc.) may not react the same way.

For straightening wigs for the first time (or as many times as you want!), I recommend using the hot water method for a quick and easy way to get the wig uniformly straight.

But for touch ups after my straight wigs have been stored for a while, I use a hair straightener/flat iron on them. Make sure you read the product label inside your wig to see the maximum temperature you should use on your wig. Most of the time, you can use the LOWEST setting on your straightener on synthetic hair. PLEASE do a test patch first on an underneath layer to test if your wig can handle the heat. If the hair burns or frays, do not continue with the straightener. Once you've done a heat test and found that your synthetic wig can handle a little bit of heat, you are ready to straighten!

How to Brush and Restore Curly Wigs

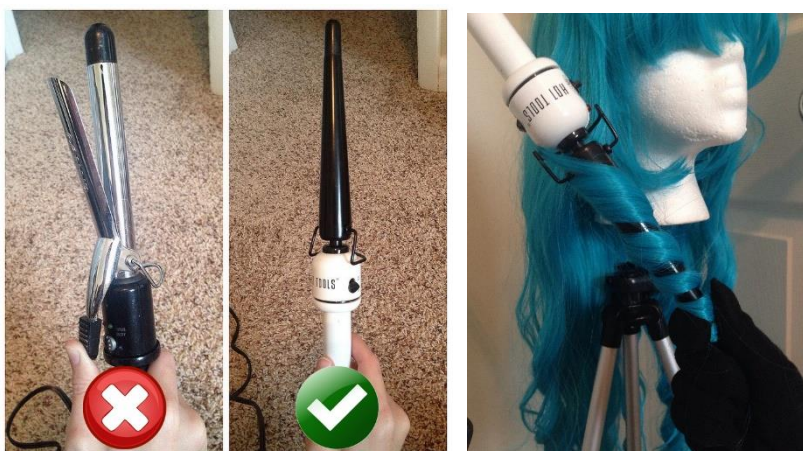
Curly wigs can be a little more difficult to maintain than straight wigs. My preferred method for brushing curly wigs is finger-combing. Finger-combing just means using your fingers to brush through hair. It is a

much more gentle way to handle hair and can extend the life of curls. You may still need to use a comb in areas that are badly tangled.



When finger-combing curls, the best way to do it is to section off the curls. You want to handle each curl individually, so again, patience is key! As you run your fingers through the curls, you want to go in the direction of the curl. This means spinning your hand as you work down the curl. After the curl is detangled, you may need to reshape the curl a little bit.

There are a few ways to reshape curls. The quickest and easiest way is to wrap the curl around your finger and hold. I think you will be surprised how much this helps the curl bounce back. If that's not enough to restore your curls, apply heat. Again, like with straightening, you should check the max temp your wig can handle.



A curling wand (no clamp) is ideal for curling wigs. If you don't have one, just be sure not to use the clamp of your styling tool. The clamp will make creases & could burn the hair, eww! Wrap the curl around the curling iron the same way you did your finger, hold for just a few seconds, then gently slide the curl off.

If your wig has tight curls (ex. [GLW Ringlet Redux](#)), you should wrap the hair tighter. If it has loose curls (ex. [GLW Duchess Elodie](#)), then wrap the hair loosely. Simple as that!

There is no guarantee that you can restore curls exactly to their original state, but I hope these tips help!

Good luck!